

**ITEM 18.           ITEM FOR COMMITTEE INFORMATION – TRAFFIC TREATMENT –  
ELIZABETH STREET FROM KING STREET TO HUNTER SYDNEY**

**TRIM RECORD NO:   2014/563819**

**RECOMMENDATION**

It is recommended that the Committee note the following:

- (A) Reallocation of kerb space on the western side of Elizabeth Street between the points and 9.1 metres and 15.1 metres north of King Street as “No Stopping”;
- (B) Reallocation of kerb space on the western side of Elizabeth Street between the points and 15.1 metres and 23.3 metres north of King Street “No Stopping 6am-10am, 3pm-8pm Mon-Fri”, “Loading Zone Ticket 10am-3pm Mon-Fri, 6am-10am Sat” and “4P Ticket 8pm-12am Mon-Fri, 10am-10pm Sat, 8am-10pm Sun & Public Holidays”;
- (C) Reallocation of kerb space on the western side of Elizabeth Street between the points 36.8 metres and 55.3 metres north of King Street as “No Stopping 6am-10am, 3pm-8pm Mon-Fri”, “Loading Zone Ticket 10am-3pm Mon-Fri, 6am-10am Sat” and “4P Ticket 8pm-12am Mon-Fri, 10am-10pm Sat, 8am-10pm Sun & Public Holidays”;
- (D) Reallocation of kerb space on the western side of Elizabeth Street between the points 55.3 metres and 88.9 metres north of King Street as “Loading Zone Ticket 6am-10am 3pm-6pm Mon-Fri, 6am-10am Sat”, “Bus Zone 10am-3pm Mon-Fri” and “4P Ticket 8pm-12am Mon-Fri, 10am-10pm Sat, 8am-10pm Sun & Public Holidays”;
- (E) Reallocation of kerb space on the western side of Elizabeth Street between the points 88.9 metres and 122.8 metres north of King Street as “Bus Zone”;
- (F) Reallocation of kerb space on the western side of Elizabeth Street between the points 178.4 metres and 228.6 metres north of King Street as “Bus Zone”;
- (G) Reallocation of kerb space on the western side of Elizabeth Street between the points 228.6 metres and 254.6 metres north of King Street as “No Stopping 6am-10am, 3pm-8pm Mon-Fri”, “Loading Zone Ticket 10am-3pm Mon-Fri, 6am-10am Sat” and “4P Ticket 8pm-12am Mon-Fri, 10am-10pm Sat, 8am-10pm Sun & Public Holidays”;
- (H) Reallocation of kerb space on the western side of Elizabeth Street between the points 261.1 metres and 279.9 metres north of King Street as “No Stopping”; and
- (I) Installation of kerb amendments and changes to lane configuration in Elizabeth Street between King and Hunter Streets to provide for the installation of the bus lanes.

**DECISION**

## **BACKGROUND**

On 19 December 2013, the NSW Government adopted the Sydney City Centre Access Strategy (Access Strategy). The Access Strategy will deliver a fully integrated transport network in Sydney's City Centre that puts the customer first and meets the growing transport task. It will mean more people use public transport to access the City Centre and it will change the way people move around within it.

The Access Strategy considers all transport modes and demonstrates how light rail, buses, trains, ferries, cars, taxis, pedestrians and cyclists will interact in the heart of Sydney. The Access Strategy also provides a clear direction for how all the different transport modes will work together in the Sydney CBD to reduce congestion, provide for future growth and improve the customer experience.

The Sydney City Centre Bus Plan (SCCBP) forms part of a suite of transport improvements associated with the Access Strategy and includes:

- New dedicated Bus Lanes, Bus Stops and shelters;
- Modifying kerbs and footpaths, line markings and medians; and
- Removing and relocating some taxi ranks, Loading Zones and on-street parking spaces.

The SCCBP aims to:

- Provide a more efficient bus network that is easier for customers to use and understand;
- Create bus corridors within the CBD that improve links to key destinations and improve connectivity with other transport modes; and
- Relocate existing bus routes on George Street to enable delivery of the CBD Light Rail.

The SCCBP will be delivered by Roads and Maritime Services (RMS), in conjunction with Transport for New South Wales (TfNSW) and the City of Sydney.

## **COMMENTS**

The kerb space on the western side of Elizabeth Street between King and Hunter Streets is generally signposted as "Bus Zone". A Bus Lane currently operates on the western side of Elizabeth Street between 8am-10am, 3pm-6pm Mon-Fri.

Elizabeth Street between Eddy Avenue and Hunter Street is identified in the Access Strategy as a key bus corridor. The bus corridor includes "No Stopping", "Bus Zone" and "Bus Lane 6am-8pm Mon-Fri 10am-6pm Sat".

Where possible, loading, taxi and parking for people with disabilities will be distributed to neighbouring streets, contained within the proposed changes for the bus and cycleway plans.

Agreement was obtained from the RMS, the Sydney City Police and the State Member, for the proposed changes.

## **CONSULTATION**

The RMS publically exhibited the Review of Environmental Factors (REF) from 23 June to 25 July 2014. Notification of the REF included a letterbox drop to 36,000 properties, a

dedicated website, a drop-in centre and visits and meetings with 200 stakeholders within the affected area.

Of the 36,000 letters distributed, the RMS received 60 submissions. Of these 17 supported the proposal, 31 opposed the proposal and 12 were neutral.

Submissions opposing the proposal were concerned about the loss of loading and parking spaces, increased noise and impact to business.

Submissions supporting the proposal believed the proposal would improve public transport access to the City and reduce general traffic congestion.

Included in the consultation process, meetings were held with individual stakeholders who raised concerns about the proposals. The proposal was amended based on these concerns to better meet the needs of the community within the allowable scope of the project objectives.

### **FINANCIAL**

The SCCBP is being fully funded by the NSW State Government.

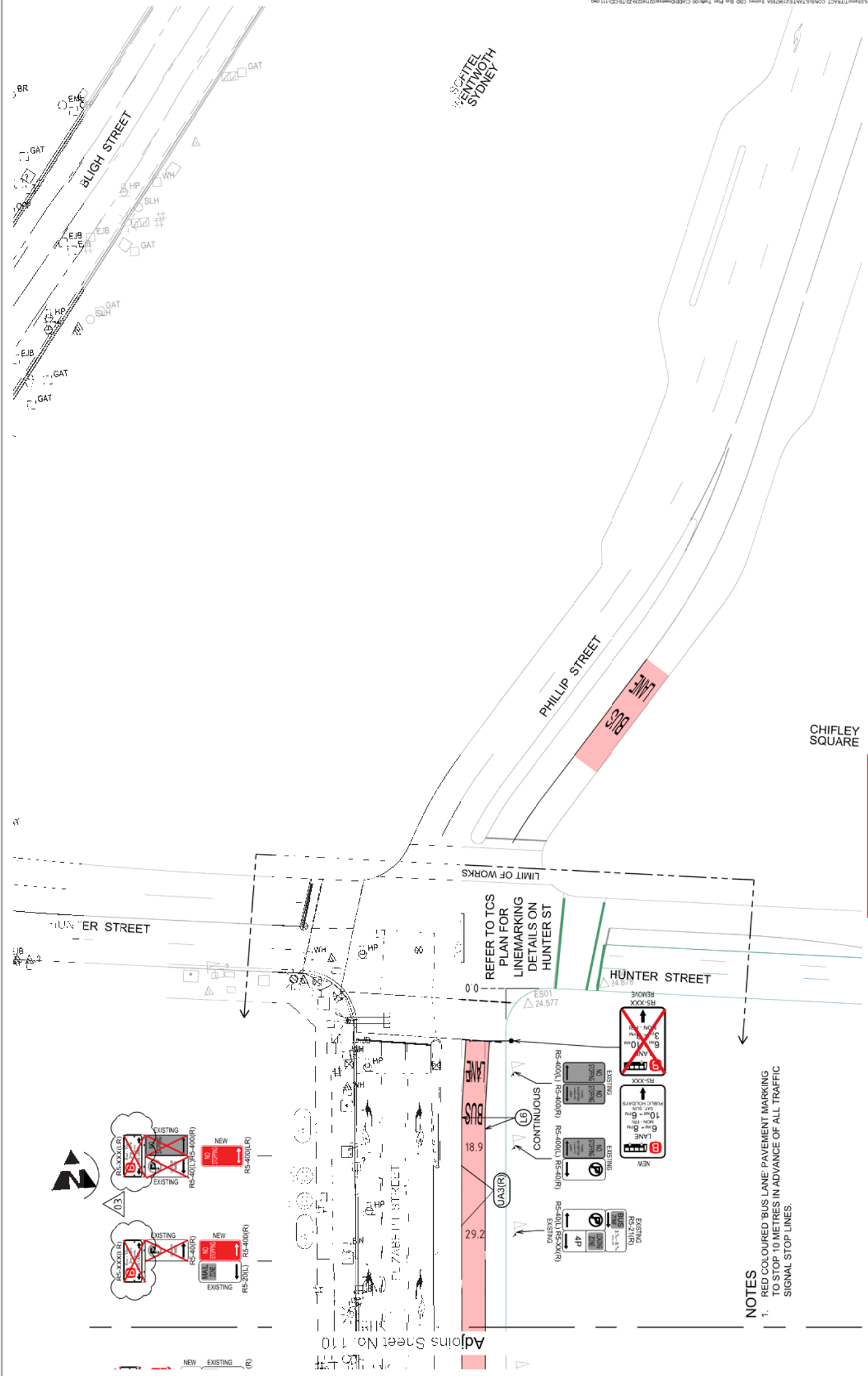
### **ATTACHMENTS**

Item for Committee Information – Traffic Treatment – Elizabeth Street from King Street to Hunter Street Sydney

Stephen Sherwin, Project Manager – Roads and Maritime Services







TRAFFIC SIGNAGE PLAN  
ELIZABETH STREET  
SHEET 12 OF 12

Project No: 14200000000000000000  
A.C.D. No: 14200000000000000000  
Date: 28/08/2014

Scale: 1:1000  
Drawing No: 12-01-111



landscape architects  
planners & urban designers  
15/159 Pitt Street Sydney NSW 2000  
Tel: 61 61 9551 5100  
Fax: 61 61 9551 5101  
Email: info@brn.com.au



**PARSONS BRINCKERHOFF**  
Level 27, Eines & Young Centre  
480 George Street  
Sydney NSW 2000  
Australia  
Telephone: +61 2 9222 5000  
Facsimile: +61 2 9222 5001  
Email: parsons@parsons.com

DRAWING CHECK PRINT	
DATE	BY
11/02/14	
Project Draft Check	
Engineer/Designer Check	
Verification/Design Check	
Verification/Approval	
Rev: A:001	

NO.	REVISION	DATE	BY
01	ISSUED FOR CONSTRUCTION	28/08/14	BR
02	ISSUED FOR CONSTRUCTION	18/11/14	BR
03	ISSUED FOR CONSTRUCTION	18/11/14	BR
04	ISSUED FOR CONSTRUCTION	11/12/14	BR

**NOTES**  
1. RED COLOURED 'BUS LANE' PAVEMENT MARKING TO STOP 10 METRES IN ADVANCE OF ALL TRAFFIC SIGNAL STOP LINES.

HOTEL WENTWORTH SYDNEY

CHIFLEY SQUARE

REFER TO TCS PLAN FOR LINEMARKING DETAILS ON HUNTER ST

Adjoins Sheet No. 110